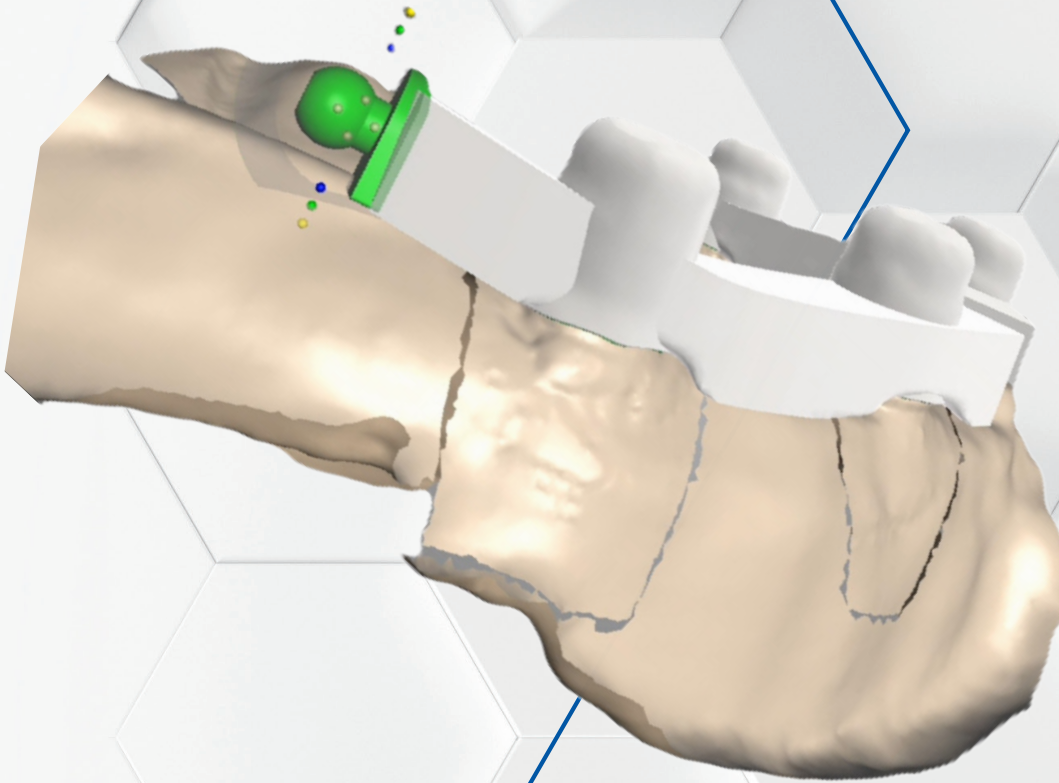




**HADER**  
SOLUTIONS



Bar overdenture with Hader  
VX and SX attachments on  
Dental Wings

*Digital Library*

**DESIGN EXAMPLE GUIDE**



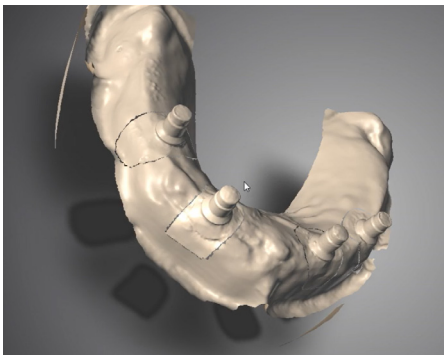
[WWW.HADER.EU](http://WWW.HADER.EU)



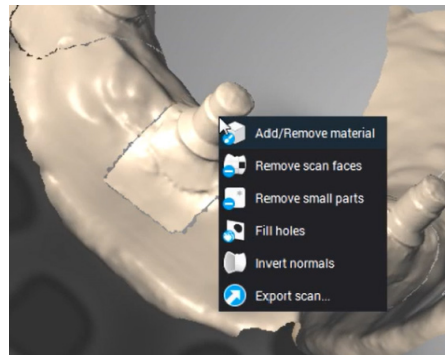
## DESIGN OF A BAR OVERDENTURE WITH HADER SX AND VX ELEMENTS.

Digital workflow of a Laboratory case using Dental Wings CAD-CAM system

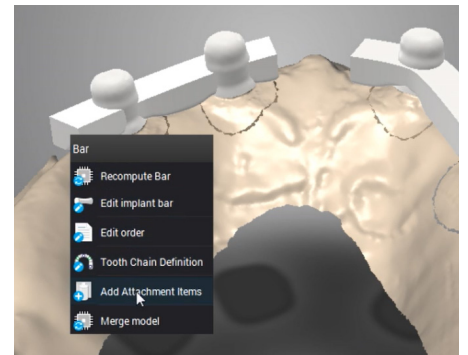
Visit our website at [www.hader.eu](http://www.hader.eu), or scan the QR code to request the Digital Library, and follow our User Guide for installation.



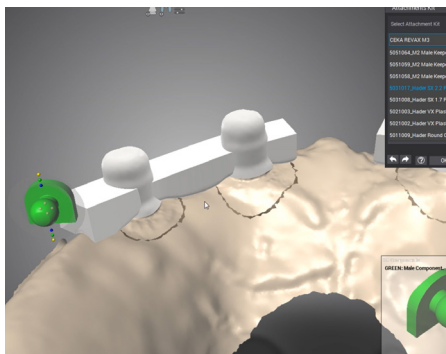
Import scanned model.



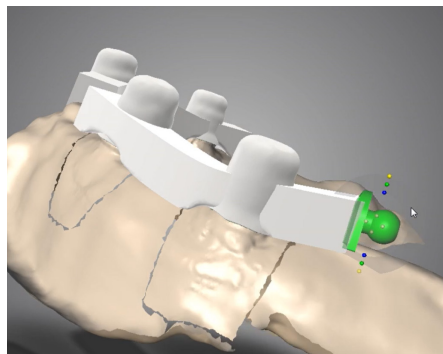
Add bar material by selecting a pillar



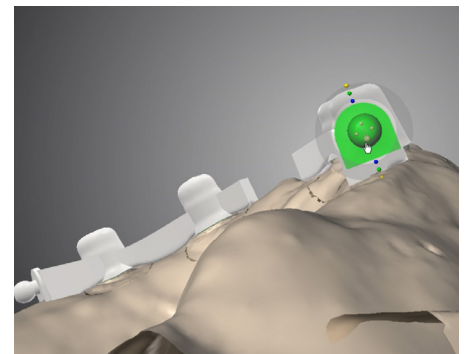
Add attachment items



Select the SX 2.2 male



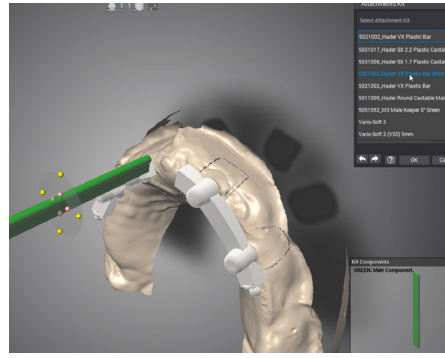
Adjust it to an optimal position



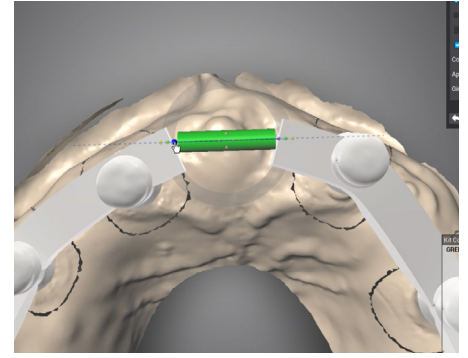
Repeat in the opposite side



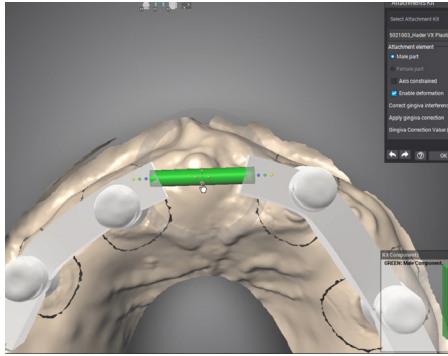
Add a bar attachment in the anterior area



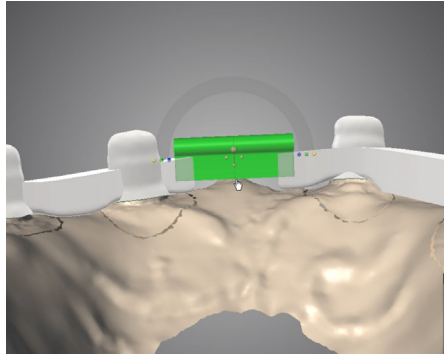
Select the Hader VX bar from the menu



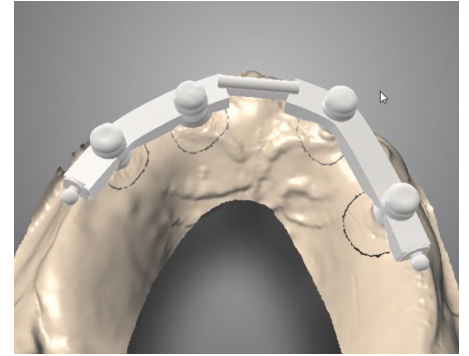
Adapt its length to connect the two portions of the bar



Position it to ensure it follows the bar and the centre of the ridge



Adjust the Y axis to ensure an optimal height and space for cleaning.



The bar is ready for manufacturing



\*Bar fabricated using milling technology



\*Prosthesis fabricated using conventional techniques.

## THE ATTACHMENTS YOU TRUST, NOW IN DIGITAL

The Hader Digital Library offers a treasure of digital files for our renowned Hader attachments, including the CX, VX, and SX systems. Craft prostheses that fit perfectly and provide superior patient comfort, all at your fingertips.

### CAD-CAM KITS USED FOR THE PRODUCTION OF THIS OVERDENTURE

#### HADER VX



5022006  
Hader VX C Kit CAD-CAM

#### HADER SX



5032011  
Hader SX 2.2 Complete w/housing CAD-CAM

All relevant kits are easily identified in the catalogue of products with the CAD-CAM logo



To acquire these or any other Hader products, please visit [www.hader.eu/en/distributors](http://www.hader.eu/en/distributors) or scan the QR code and take your dental practice to new heights.



The design depicted in this brochure serves solely as an illustrative example and should be viewed for inspirational purposes only. Dental professionals bear sole responsibility for determining the final design and manufacturing technique used for each patient.